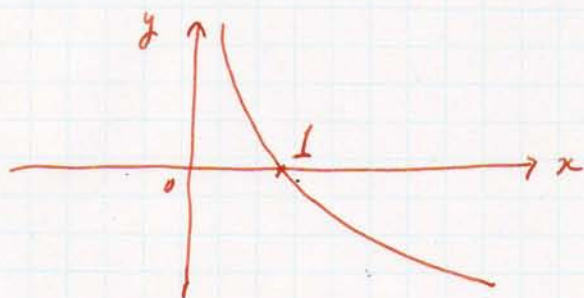
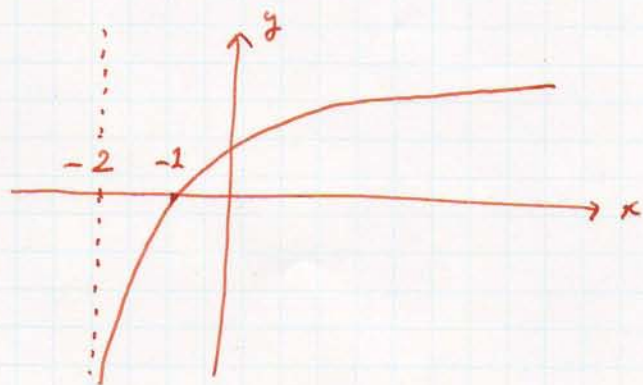


6/28 解析 1 17.

1.  $y = \log_2 \frac{1}{2} x$  のグラフをえがけ.



2.  $y = \log_{10}(2+x)$  のグラフをえがけ.



17: 1 弧度法で表せ ( $2\pi \times \frac{0^\circ}{360^\circ}$ )

$$15^\circ = \frac{\pi}{12}$$

$$30^\circ = \frac{\pi}{6}$$

$$45^\circ = \frac{\pi}{4}$$

$$90^\circ = \frac{1}{2} \pi$$

$$110^\circ = \frac{11}{18} \pi$$

$$145^\circ = \frac{29}{36} \pi$$

$$260^\circ = \frac{13}{9} \pi$$

$$1080^\circ = 6\pi$$

$$420^\circ = \frac{7}{3} \pi$$

17: 2 値を求めよ

$$\cos \frac{5}{4} \pi = \frac{-1}{\sqrt{2}}$$

$$\sin \frac{2}{3} \pi = \frac{\sqrt{3}}{2}$$

$$\tan \frac{7}{6} \pi = \frac{1}{\sqrt{3}}$$

$$\cos \frac{7}{2} \pi = 0$$

$$\tan \frac{15}{4} \pi = -1$$

$$\sin \left(-\frac{11}{6} \pi\right) = \frac{1}{2}$$